



Aug 13, 2013 - Present

INFRASTRUCTURE AT SCHOOL

INFRASTRUCTURE AT SCHOOL REPORT

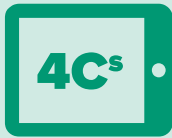
ALLEGHENY IU 3

CLASSROOM

ACCESS

SKILLS

ENVIRONMENT



Teachers who have difficulty getting access to high quality computers for students when needed are much less likely to plan and implement classroom activities that include digital communication, digital collaboration, digital creativity, and critical thinking.

Teachers' and students' access to technology at school is a prerequisite for 21st Century Learning. According to *NCES*, the ratio of students to computers in the classroom every day is 5.3 to 1. However, this is often not sufficient for transformative instruction to occur.

Only 45% of all Clarity teachers in the nation report that it is always easy to get access to computers when needed for class. Further only 10% of Clarity teachers across the nation rate the quality of computers and internet access at their school as excellent. Teachers who have difficulty getting access to high quality computers for students when needed are much less likely to plan and implement classroom activities that include digital communication, digital collaboration, digital creativity, and critical thinking.

Schools and districts should ensure that all students at all schools have sufficient access to technology throughout the school day. Students are digital natives who often have better access to technology outside of school as compared to inside. This results in a digital divide between school and reality for many of today's youth. Increasing access can bridge this gap.

74%



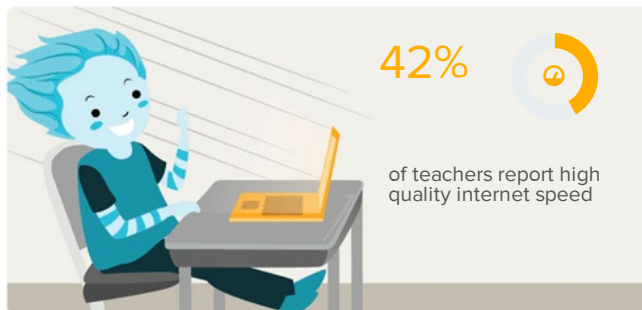
of teachers can get devices for their students when needed more than half the time



42%



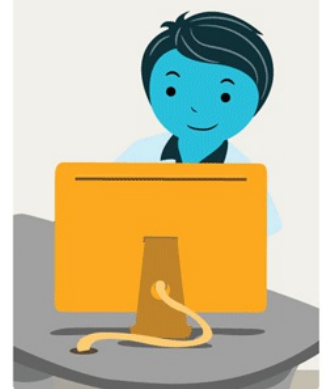
of teachers report high quality internet speed



93%



of teachers have access to a computer for their own use all the time at school



58%



of teachers report a typical student to computer ratio of 2:1 or 1:1



Contributing Factors

The factors that most contribute to the success of your organization include ...

STUDENT TECHNOLOGY

ACCESS AT SCHOOL

PROFICIENT



Historical data will appear here once you have collected year-over-year data.

TEACHER TECHNOLOGY

ACCESS AT SCHOOL

ADVANCED



Historical data will appear here once you have collected year-over-year data.

CASE™ Score Legend	● Beginning	● Emerging	● Proficient	● Advanced	● Exemplary
	800-899	900-999	1000-1099	1100-1199	1200-1300

INFRASTRUCTURE AT SCHOOL REPORT

ALLEGHENY IU 3

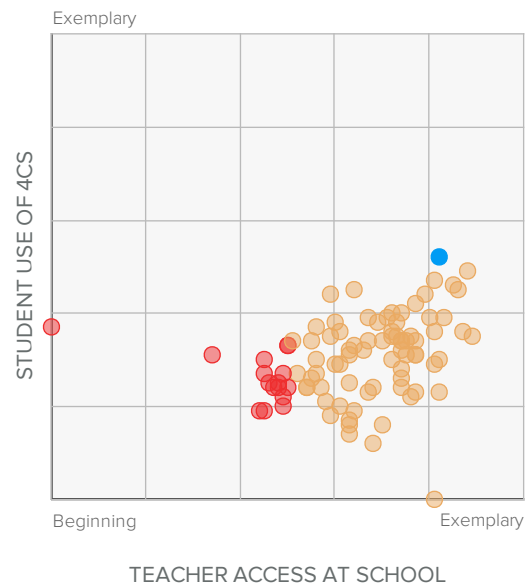
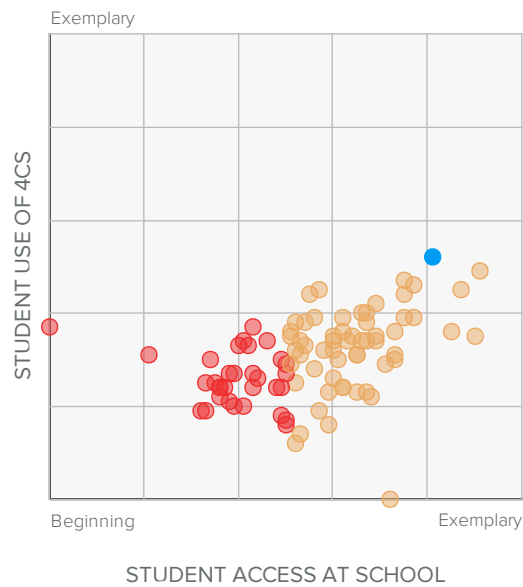
CLASSROOM

ACCESS

SKILLS

ENVIRONMENT

Scatterplots



CASE™ Score Legend

● **Beginning**
800-899

● **Emerging**
900-999

● **Proficient**
1000-1099

● **Advanced**
1100-1199

● **Exemplary**
1200-1300

Aug 13, 2013 - Present

INFRASTRUCTURE AT SCHOOL REPORT

ALLEGHENY IU 3

CLASSROOM

ACCESS

SKILLS

ENVIRONMENT

SCHOOL SCORECARD

	Student Access at School	Teacher Access at School
Allegheny Valley Sd		
Acmetonia Primary School	●	●
Colfax Upper El School	●	●
Springdale Jshs	●	●
Avonworth Sd		
Avonworth Elementary School	●	●
Avonworth High School	●	●
Avonworth Middle School	●	●
Bethel Park Sd		
Abraham Lincoln Elementary School	●	●
Benjamin Franklin Elementary School	●	●
Bethel Memorial Elementary School	●	●
Bethel Park High School	●	●
George Washington Elementary School	●	●
Independence Middle School	●	●
Neil Armstrong 5 6 Middle School	●	●
Brentwood Borough Sd		
Brentwood Ms	●	●
Brentwood Shs	●	●
Elroy Ave. Elementary School	●	●
Moore School	●	●
Chartiers Valley Sd		
Chartiers Valley Hs	●	●
Chartiers Valley Intrmd School	●	●
Chartiers Valley Ms	●	●

Clairton City Sd		
Clairton El School	●	●
Clairton Ms/Hs	●	●
Elizabeth Forward Sd		
Central Elementary	●	●
Elizabeth Forward Middle	●	●
Mt. Vernon Elementary	●	●
William Penn Elementary	●	●
Gateway Sd		
Dr. Cleveland Steward Jr. Elementary	●	●
Evergreen Elementary	●	●
Gateway Middle	●	●
Gateway Senior High	●	●
Moss Side Middle	●	●
Ramsey Elementary	●	●
University Elementary	●	●
Hampton Township Sd		
Central El School	●	●
Hampton Hs	●	●
Hampton Ms	●	●
Poff El School	●	●
Wyland El School	●	●
North Allegheny Sd		
Bradford Woods Elementary	●	●
Carson Middle	●	●
Franklin Elementary	●	●
Hosack Elementary	●	●
Ingomar Elementary	●	●
Ingomar Middle	●	●
Marshall Elementary	●	●
Marshall Middle	●	●
Mc Knight Elementary	●	●
North Allegheny Hs	●	●

North Allegheny Shs		
Peebles Elementary		
Penn Hills Sd		
Forbes Elementary		
Linton Middle		
Penn Hebron Elementary		
Penn Hills Shs		
Washington Elementary		
Pine Richland Sd		
Eden Hall Upper El School		
Hance El School		
Pine Richland Hs		
Pine Richland Ms		
Richland El School		
Wexford El School		
Plum Borough Sd		
Center Elementary School		
Holiday Park Elementary		
Oblock Junior High School		
Pivik Elementary		
Plum Senior High		
Regency Park Elementary		
Stevenson Elementary		
Quaker Valley Sd		
Edgeworth Elementary		
Osborne Elementary		
Quaker Valley High		
Quaker Valley Middle		
South Fayette Township Sd		
South Fayette Middle		
West Allegheny Sd		
Donaldson Elementary		
Mckee Elementary		
West Allegheny High		

West Allegheny Middle	●	●
Wilson Elementary	●	●
West Jefferson Hills Sd		
Gill Hall Elementary School	●	●
Jefferson Elementary School	●	●
Mc Clellan Elementary School	●	●
Pleasant Hills Middle School	●	●
Thomas Jefferson High School	●	●
Woodland Hills Sd		
Dickson Elementary	●	●
Edgewood Elementary	●	●
Fairless Elementary	●	●
Shaffer Elementary	●	●
Wilkins Elementary	●	●
Woodland Hills Academy	●	●
Woodland Hills Junior High	●	●
Woodland Hills Senior High	●	●

CASE™ Score Legend

● **Beginning**
800-899

● **Emerging**
900-999

● **Proficient**
1000-1099

● **Advanced**
1100-1199

● **Exemplary**
1200-1300

Aug 13, 2013 - Present